

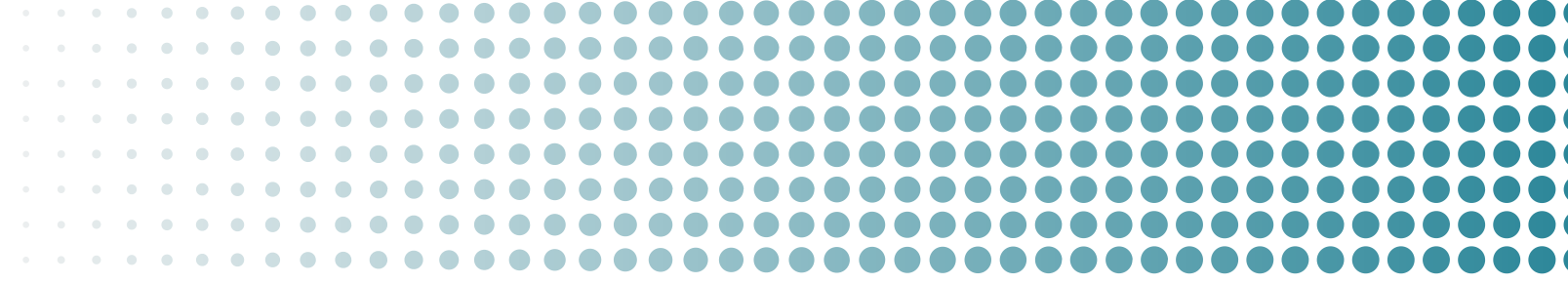
# ***captive devices***

*Bridging the gap in professional facial capture*

*Bringing professional facial motion capture to creators worldwide*







*Founded by veterans from Epic Games/Cubic Motion, Captive Devices is dedicated to democratizing access to professional-grade facial motion capture technology. The CoreHMC represents our commitment to delivering Hollywood-quality tools to creators at all levels.*

#### **COMPANY CONTACT:**

*Email: [hello@captivedevices.io](mailto:hello@captivedevices.io)*

*Web: [captivedevices.io](https://captivedevices.io)*

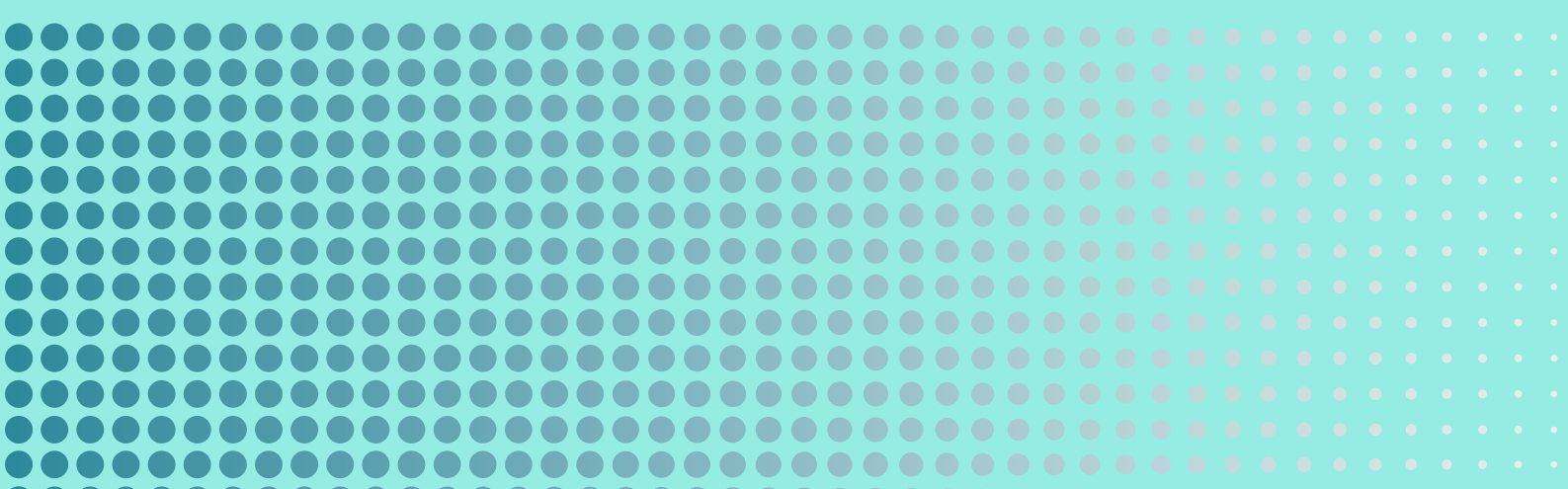
*LinkedIn: [linkedin.com/company/captivedevices](https://linkedin.com/company/captivedevices)*

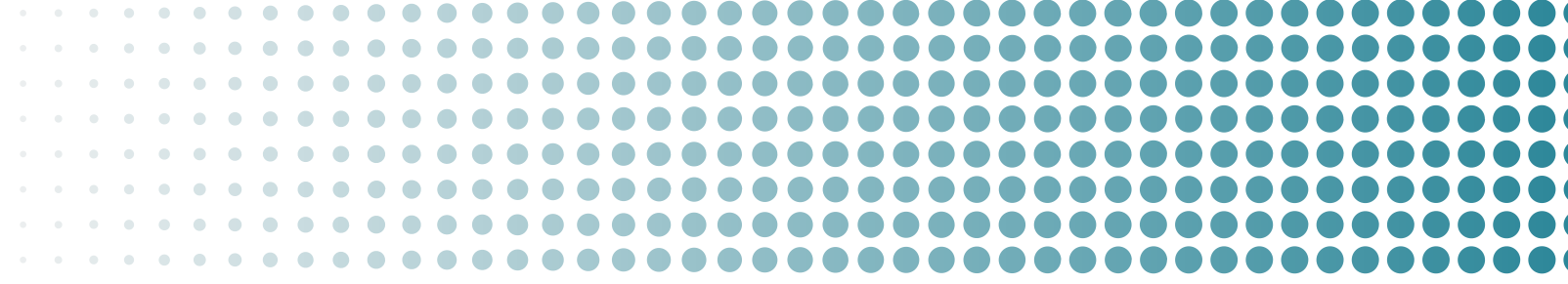
*Registered Address: 55 Hoole Road, Chester, United Kingdom, CH2 3NJ*

*Company Registration: 15610227*

*Preliminary specifications subject to change.*

*© 2025 Captive Devices Ltd.*





## Why choose CoreHMC?

### **THE PERFECT BALANCE OF PROFESSIONAL QUALITY AND ACCESSIBILITY**

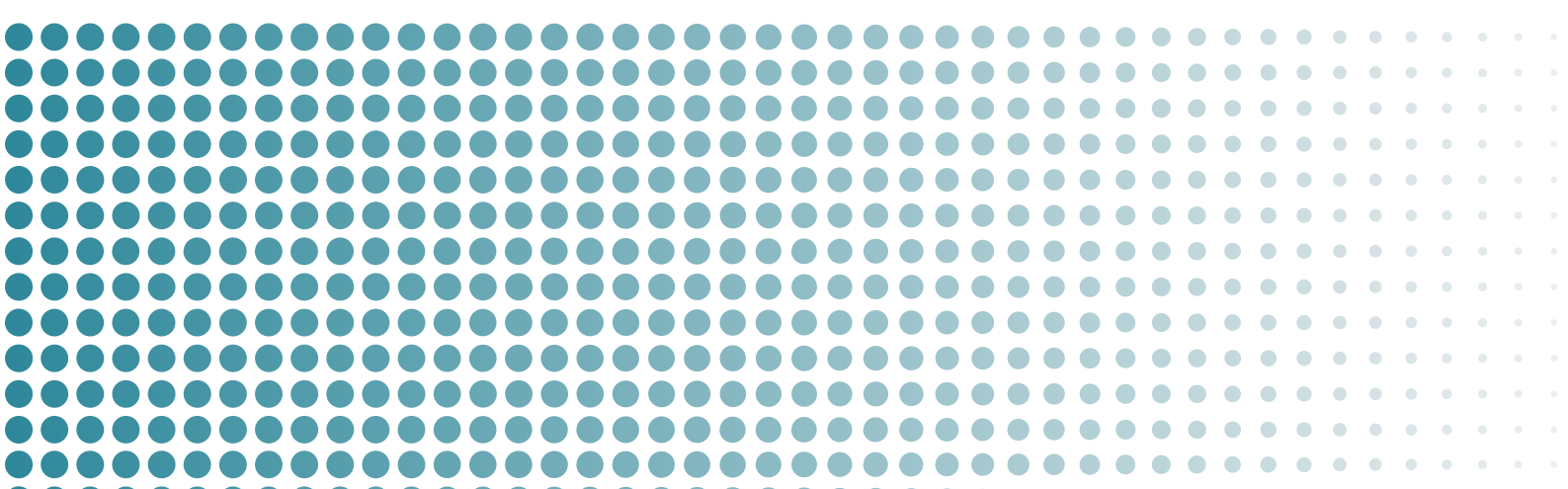
*The motion capture industry has seen significant consolidation, leaving creators with either fully custom, extremely expensive solutions or low-end, inadequate alternatives.*

*CoreHMC fills this critical gap, providing:*

- Professional-grade quality backed by our team's experience at Epic Games/Cubic Motion*
- Production-ready design refined through collaboration with leading studios*
- Pricing at £29,700 + tax and shipping*
- Available now with units shipping May 2025*
- Ongoing support and development from a dedicated team*

*"We believe in providing our team with the tools they need to excel. By investing in technologies like Captive Devices' CoreHMC system, we're empowering our artists and animators to achieve their creative vision without technical limitations."*

*— Roger Barnett, Animation Director, Dambuster Studios*





## Camera Module

### **PROFESSIONAL-GRADE FACIAL CAPTURE**

- 4MP global shutter cameras (2472x1600) for crystal-clear image quality
- Vertical Stereo or Mono configuration adaptable to your production needs
- Dual LED system with visible white and invisible IR lights for versatile illumination
- Combined camera and light modules for streamlined operation
- 23.98-60fps capture supporting industry-standard frame rates
- Dynamic Range: 69.13 dB for exceptional detail in highlights and shadows
- Signal to Noise ratio: 39.79 dB ensuring clean, professional-quality data

*BENEFIT: Capture subtle facial micro-expressions with unprecedented detail, giving your characters authentic emotional performances that connect with audiences.*





## On-body Recorder & Battery

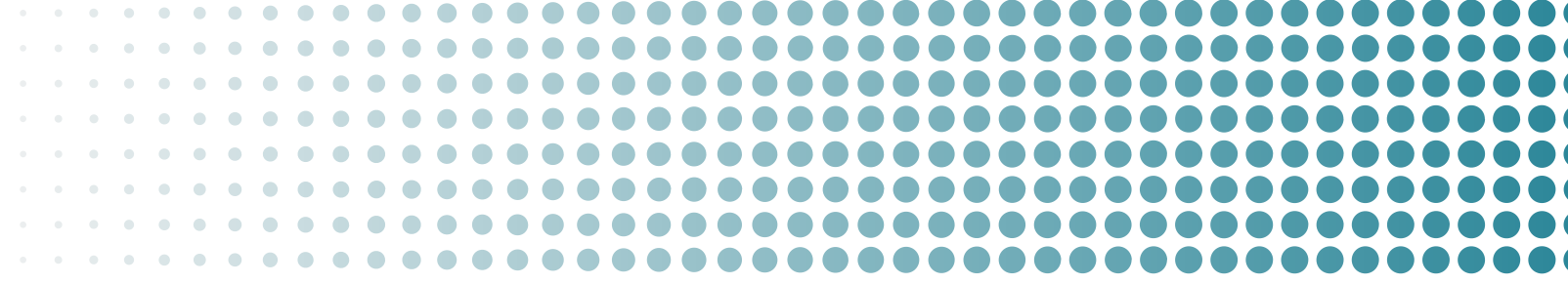
### **RELIABLE PERFORMANCE CAPTURE**

- *Fanless design for completely silent operation*
- *Hot-swappable battery system for extended shooting sessions without interruption*
- *Integrated Ambient ACN timecode and framesync for perfect synchronization*
- *Support for LTC SMPTE 12M and 2x LTC SMPTE 12M timecodes ensuring compatibility with industry-standard systems*
- *Multiday recording, able to store over 8 hours of footage with onboard encoding or 1.5 hours of raw images*
- *Long battery life 4 to 6 hours battery life under standard conditions*
- *LED status indicators for intuitive monitoring*
- *Physical record button for network-free shooting*
- *Multiple recording formats supported:*
  - MJPEG
  - H264
  - Uncompressed RAW

*BENEFIT: Maintain continuous shooting with silent, reliable operation that integrates seamlessly with your existing body capture, audio, and video systems.*





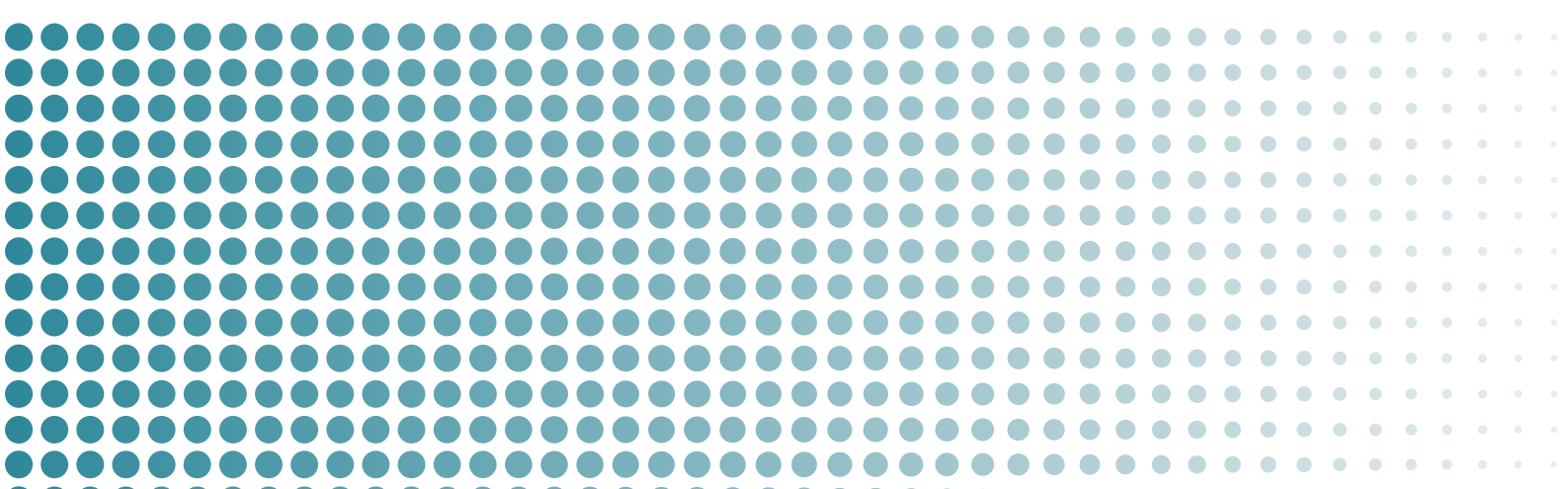
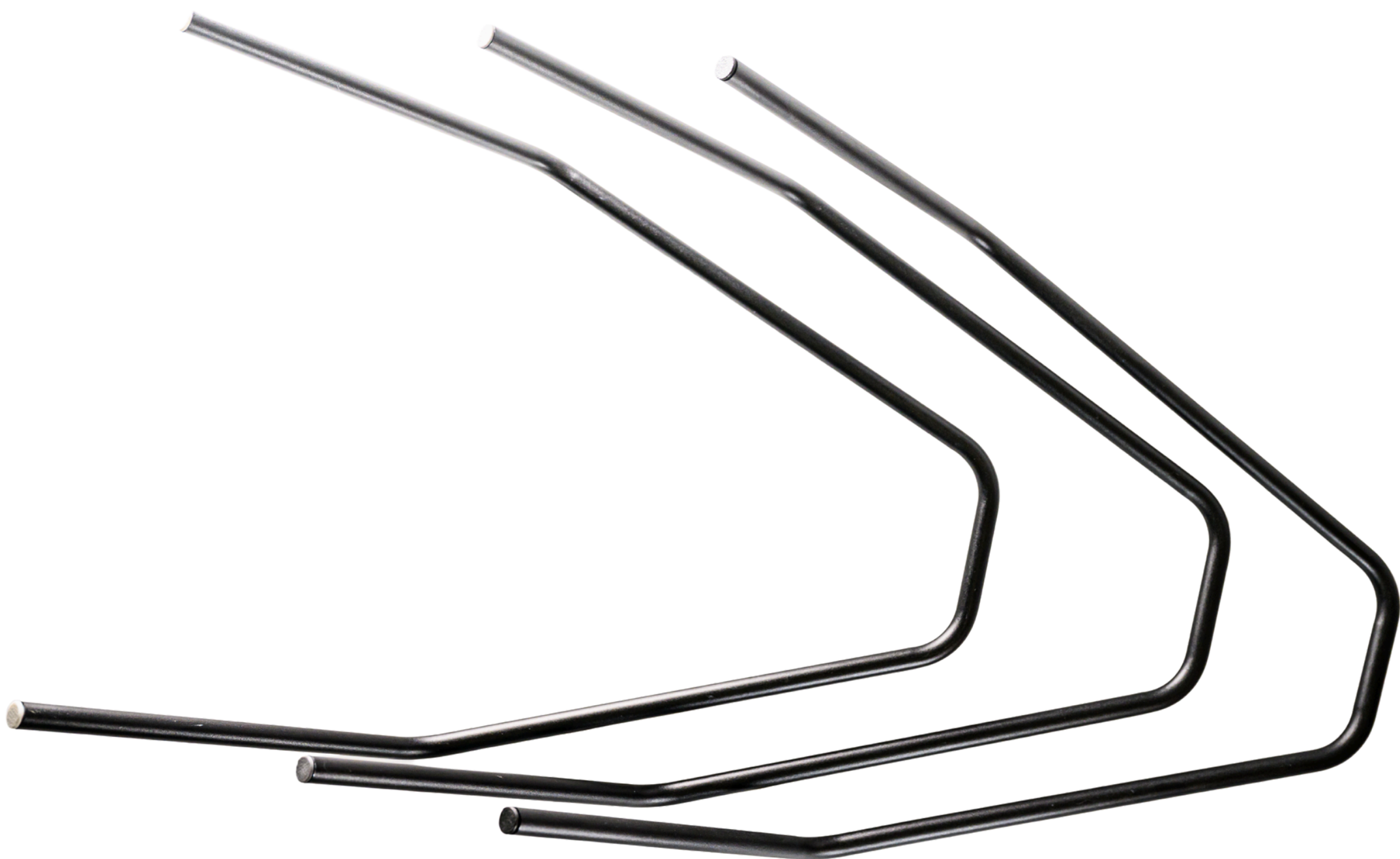


## Boom

### **PRECISION-ENGINEERED STABILITY**

- *Dual or single arm configurations available to suit your specific production requirements*
- *Rigid mount system for precise alignment and rock-solid stability*
- *Fine-grained discrete adjustment for repeatable setup and consistent results*

*BENEFIT: Achieve consistent, reliable facial data across multiple takes and shooting days, eliminating time-consuming clean-up and reshoots.*





## Helmet System

### **COMFORT MEETS PERFORMANCE**

- *Three helmet sizes (S, M, L) and 3 foam padding thicknesses for perfect fitting*
- *Color-coded padding system for quick setup and identification*
- *Tough and lightweight resin construction balancing durability with comfort*

*BENEFIT: Keep your performers comfortable during extended sessions, resulting in better performances and more productive shooting days.*





## Software

### INTUITIVE CONTROL & INTEGRATION

- Windows-based control interface for easy operation
- Real-time WiFi monitoring for immediate feedback
- Unreal Engine integration for streamlined workflow
- PeelCapture Integration for expanded compatibility
- Multi-HMC support for complex productions

*BENEFIT: Seamlessly integrate facial capture data into your existing production pipeline without time-consuming conversions or compatibility issues.*





## Industry Compatibility

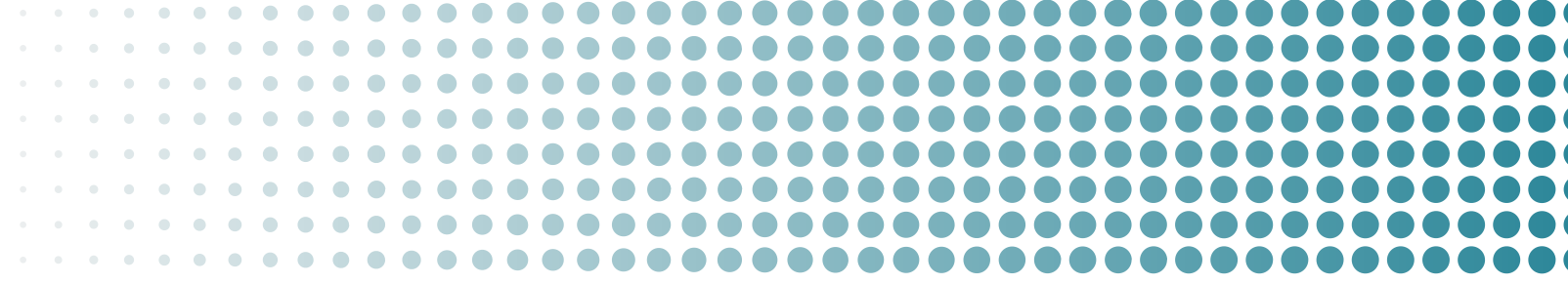
### **WORKS WITH YOUR EXISTING TOOLCHAIN**

*The CoreHMC is designed to integrate seamlessly with your existing motion capture infrastructure:*

- *Animation Software: Compatible with FaceX, Faceware, Facegood, Di4D and Metahuman Animator*
- *Body Motion Capture: Fully tested with Vicon, Move.ai, Captury and OptiTrack systems*
- *Production Environments: Designed for both studio and location shooting*







## Frequently Asked Questions

**Q: How does the CoreHMC compare to custom solutions from larger companies?**

*A: The CoreHMC delivers comparable professional-quality results at a fraction of the cost of fully custom solutions, with the added benefit of being available off-the-shelf.*

**Q: What kind of training is required?**

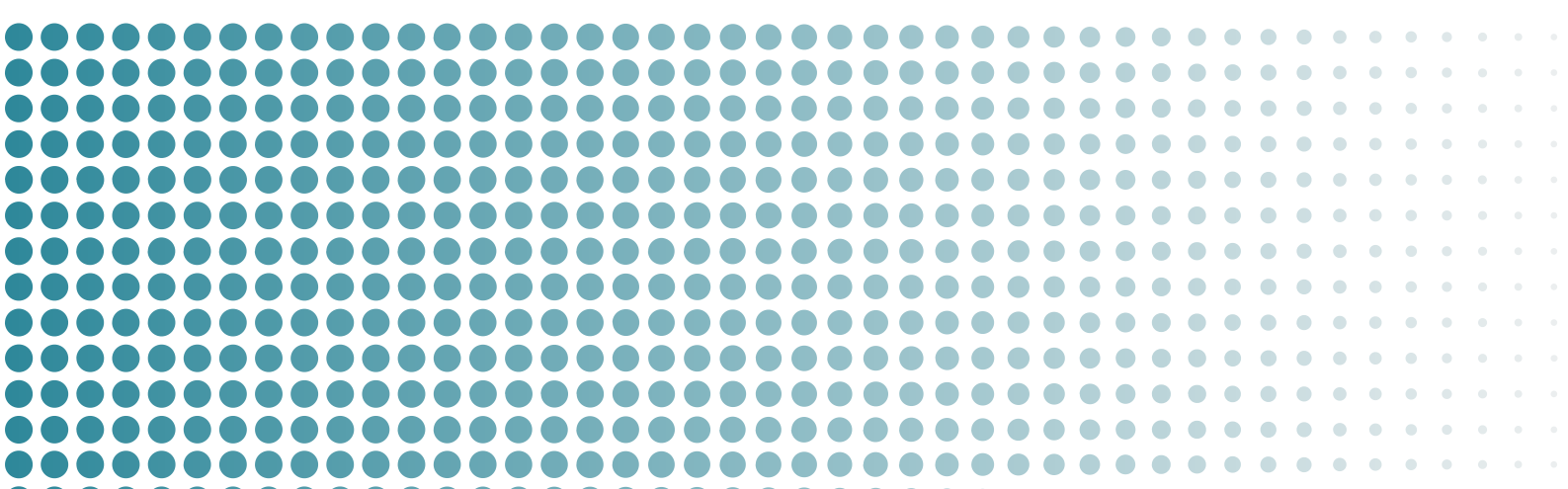
*A: The CoreHMC is designed for intuitive operation. Most technical teams can be up and running within a day, with comprehensive documentation and support available.*

**Q: Can we try before we buy?**

*A: Contact us to arrange a demonstration or discuss rental options for evaluation periods.*

**Q: What maintenance is required?**

*A: The CoreHMC is engineered for durability with minimal maintenance requirements. Routine care instructions are included with every system.*





## Resellers

**Target3D are the UK's number one suppliers and installers of motion capture equipment.**

*Contact our friendly sales team today for more information and to organise a free demonstration at our Dock Street studio space.*

### **Target3D Ltd**

Address: 11C Dock Street,  
London, E1 8JN, United Kingdom

Website: [Target3D.co.uk](http://Target3D.co.uk)

Email: [sales@target3d.co.uk](mailto:sales@target3d.co.uk)

Phone: (+44) 0203 488 2575



Part of Target3D  
Visit [StudioT3D.com](http://StudioT3D.com)

